



REMEMBER

Do not Litter!!

LITTERING IS ILLEGAL

Under Cayman law, littering is illegal. Litter is defined as any garbage deposited in a public space or on private property without the owner's consent.

The act of littering can attract a fine of **\$CI 500.00** or **six (6) months imprisonment** upon conviction.

24 Hour drop off at Georgetown Landfill

Located at the entrance of the Landfill and available to the public for the disposal of all types of waste.

Reduce-Reuse-Recycle

Recycling drop off sites for

Plastics (#1/#2)| Glass & Ceramic Dishes|
Paper & Cardboard| Tin & Aluminium Cans

At the following locations:

- **Foster's Food Fair-IGA**
Airport Centre|Republix Plaza|
Countryside Shopping Village|
The Strand
- **Kirk Market**
- **Hurley's Supermarket**

Contact Us

Department of Environmental Health

Grand Cayman

P.O. Box 1820 | Grand Cayman | KY1-1109

Tel: 345-949-6696 |

Email: deh@gov.ky

Solid Waste Office

Tel: 345-949-8793

Cayman Brac & Little Cayman

P.O. Box 212 | Cayman Brac | KY2-2101

Tel: 345-948-2321



©2017



MANAGING YOUR HOUSEHOLD GARBAGE



Department of
Environmental Health
Working now and for the Future

DEH Collects...

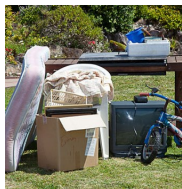
Play your Part!

Residential Garbage



This refers to solid waste items that are regularly used around the home. These include bottles, cans, paper, leftover foods, grass cuttings etc. Kerb side collection is done by DEH once per week.

Bulk Garbage



Bulk Garbage refers to those large items that cannot fit into a regular garbage truck. Included in this category are old appliances, furniture, tree branches, pieces of metal etc. These are either collected by DEH at kerb side during a special clean-up activity in November/December or throughout the year for a fee.

Infectious Garbage



This includes human waste and objects contaminated with bodily fluids. It is also called Biomedical waste. These are collected by DEH separately and incinerated. Special locking containers are provided to lessen exposure to this type of waste.

Commercial Garbage



All businesses including housing complexes with more than ten (10) households must rent garbage containers. These can be rented from DEH on a daily, monthly or annual basis. Frequency of collections range from once per month to six (6) days per week.



Remove Broken Glass!

Place broken glass, syringes, thorns or sharp household items in boxes, or rigid plastic containers where possible and dispose of them at the nearest Landfill.



Separate Hazardous Waste!

Never put hazardous items such as paint, solvents, bleach and cleaning supplies into your garbage. These items can be dangerous.



Avoid Oils!

Cooking and motor oil, grease and other liquid waste; should be dropped off at the recycling drop off site at the George Town Landfill.



Bag your garbage!

To avoid spillage; put all garbage in large garbage bags prior to placing them in a garbage container.



Use Sturdy Containers!

Always place garbage bags into durable containers with tightly fitted hinged covers and easy-to-grip handles.



Lighten the Load!

Help prevent worker injury by ensuring that garbage bags/containers weigh 40 pounds or less.



Secure Containers!

Place garbage containers into enclosures before scheduled collection to secure garbage from stray animals and to avoid loose particles from being blown away.



Ensure Garbage is Accessible!

Always remove containers from their enclosures and place them at the front/side of the property accessible from the roadway. Containers must never impede the flow of traffic.